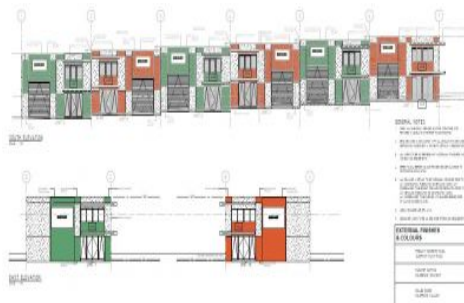




LOT 10 (105) EAST RIVER ROAD, DENMARK WA - 3D VIEW

NOTE: FOR ILLUSTRATION PURPOSES ONLY. REFER TO PLANS FOR ACTUAL BUILDING DETAILS



## 10 East River Road Denmark WA

Located in the Denmark Industrial Area are these 161m<sup>2</sup> Warehouse / Office units due to begin construction.

Pricing of units:

Units 2 - 11 (161m<sup>2</sup>) at \$325,000 + GST

Units 1 and 12 (front units 161m<sup>2</sup>) at \$355,000 + GST

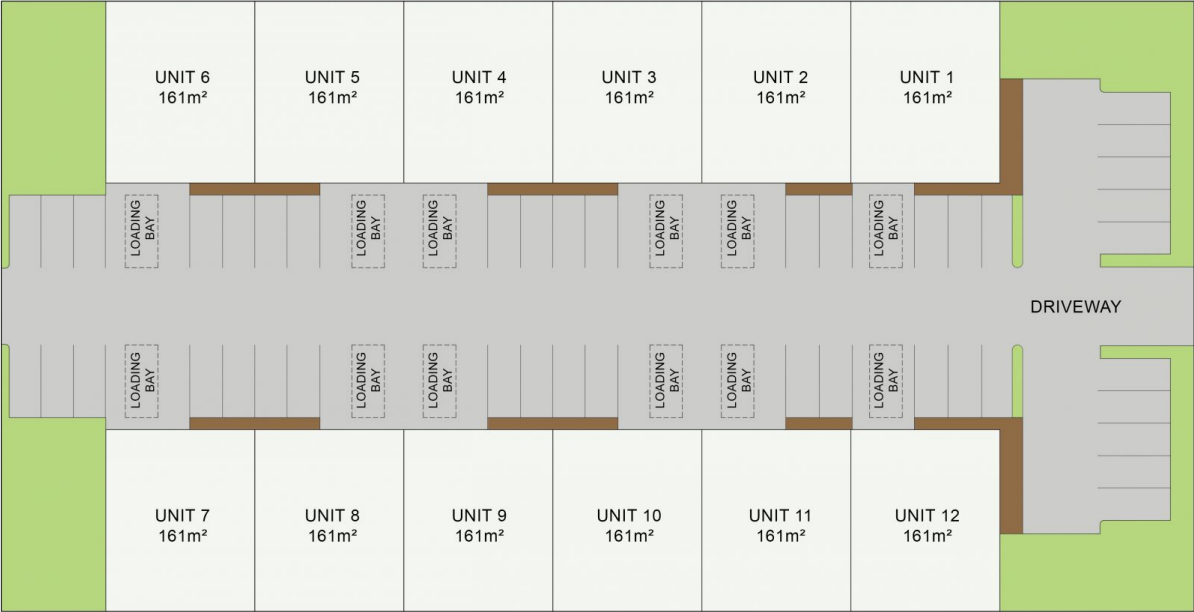
Construction - Tilt-up concrete panel with quality finishes.

For further details contact Scott Durell at Realty Source on 0400 500 288.

**Price** : Frpm \$325,000 + GST  
**Building Size** : 161 sqm  
**View** : <https://www.realtysource.com.au/sale/wa/south/denmark/commercial/industrial/8013476>



**Scott Durell**  
08 9203 7732



This floor plan including furniture, fixture measurements and dimensions are approximate and for illustrative purposes only.  
BoxBrownie.com gives no guarantee, warranty or representation as to the accuracy and layout.  
All enquiries must be directed to the agent, vendor or party representing this floor plan.

105 EAST RIVER ROAD, DENMARK